



e-letter



May 14th
Tour: Schell's Brewery
(NOTE: Saturday)
New Ulm, MN

Sponsor



Inside this issue:

- FMEA Spring Seminar: a big success, p.7
- Second FMEA session planned p. 6
- Spring Tour > SATURDAY this year p. 4



Just a few of the 70 attending the FMEA seminar presented by Tom Humphreys on April 12.



Recognize anyone? Ask them about the seminar.

Didn't attend? Couldn't attend?

See page 6 about a second chance in May.

Section 1214 Partners in Quality



- ASQ Winona-La Crosse Section 1216 www.asq1216.org
- Rochester Area Quality Council www.raqc.com
- Minnesota Council for Quality www.councilforquality.org
- APICS – Southern Minnesota Chapter www.apicssomn.org
- South Central Technical College www.southcentral.org
- Southern MN Chapter of SME. <http://chapters.sme.org/162/homepage.htm>
- ASQ Minnesota Section 1203 www.mnasq.org

Partner members receive a 10% discount on any 1214 sponsored training

Chairperson's Corner

Just a couple of things....

Every year, we struggle with finding a topic for our annual seminar. We try to find topics that will inform as well as educate you on some quality topic or teach you some new quality tool. Some years we have been way off base and only get a few attendees, but it appeared that this year's April 12th seminar we were right on the money. We had 73 people registered for the class and had to start a waiting list to get into the class. Due to this overwhelming success, we have scheduled another seminar for May 25th. If you couldn't attend the April 12th class or ended up on the waiting list, be sure to get registered for this class. There is additional information elsewhere in the newsletter or find it on our website, www.asq1214.org.

Our last program for this year will be a trip to the Schell's Brewery in New Ulm. A fun, as well as educational day has been planned for you so if you haven't signed up yet, please do so today. Feel free to bring your spouse, significant other or a friend along – you can register through the website or send me an email. Bill, our newsletter editor has included more information elsewhere in this newsletter.

Although the brewery will be the last event for the ASQ calendar year, the board will continue to meet over the summer and put together the program year for 2005-2006. We are adding two new board members, Tanya Walters and Russell Scheller and saying good bye to Dick Sunsdahl, our longest standing board member in the history of the Hiawatha section. We will miss Dick and all the knowledge and experience that he has brought to the board over the years. Hopefully, he will come back and visit us from time to time and let us know how his antique tractor part business is doing. Happy retirement Dick!

Sincerely,

Lisa Krause

Know someone in ASQ who would like to get this newsletter? Print this page and have them follow these simple directions:

To sign up for Section 1214 email Newsletter:

1. Go to www.asq.org
2. Click on **ASQ Members Sign-In**
3. Enter your ASQ member number and password
4. Click on **Change Address** and select **Set Preferences**
5. Find **E-mail Addresses & Preferences** and enter your email address if it isn't listed, and click on **Sections**.
(Read the Membership Privacy paragraph carefully!)
6. Click on **Continue**
7. Click on **Continue**
8. Click on **Close Window**

Company Sponsor Profile

2004 - 2005
Company Sponsors

September
Blount, Inc.

October
Advanced Component
Technologies, Inc

November
Malt - O - Meal

December
Micron

January
Wenger

February
Fleetguard, Inc.

March
SPX Corporation

April
Truth Hardware

May
Kato Engineering

June
Northstar Quality, Inc.

July
OPEN

August
OPEN

*Company sponsors also
support our web site.
Contact John Moorhouse at

john@northstarquality.com

to find out how your
company can help.



Leroy Somer North America

Kato Engineering is a global OEM provider of power generation systems in the 500 kW to 20 MW range. Kato has been providing products to the market for 78 years with current specialties in the oil and gas, traction, Naval, and maritime markets.

The "Kato" name brand in the market represents the highest quality available. Products Kato uses a plant wide incentive system to drive for attainment of key operational metrics and meet stringent industry specific specifications through an ISO9001 Quality system. In 2003 Kato Engineering won the Mankato Area Council for Quality's Corporate Quality Award.

A strong design base provides Design-to-Order generators in 6 to 12 weeks. Manufacturing excellence is held in winding large machining, assembly, and testing. Manufacturing planning is supported through a Total Preventative Maintenance program. With the strength of our parent company, Emerson Corporation, strategic outsourcing and business partnering provides a responsive cost competitive structure. Customer service is provided through a complete Parts and Service department and a worldwide Authorized Service Center system. Kato Engineering is part of Emerson Corporation's industrial Automation division reporting through the Leroy Somer organization.

**Want to see your company's
name on our website?**

What does being a company sponsor mean?

There are costs associated with printing the newsletter and maintaining our new website. To help with these costs, we offer companies an opportunity to advertise their business in our newsletter and now on our web page. For just \$175, you can sponsor the newsletter and website for one month.

We currently have three months available, **July and August**. If you think your company would like one of these spots, call John Moorhouse at 507-279-3513 or email him at john@northstarquality.com

Program: Annual May Tour
Location: August Schell Brewery
Date: Saturday, May 14 > Note: this is a Saturday event<
Place: New Ulm, MN
Time: 11:00 AM
Cost: \$15.00
Meal: We will provide you \$10 in New Ulm Chamber Dollars - good at all city restaurants

The tour is limited to 50 people, so be sure to sign up early.

Reservations due by, 12:00 Noon, Monday May 9. Please contact:

Lisa Krause, Section Chairperson 507-645-6681 x4304

Or email at lisa_k_krause@malt-o-meal.com

May ASQ Tour: August Schell Brewing Company

Join ASQ Hiawatha Section 1214 for a tour of the historic August Schell Brewing Company in historic New Ulm, Minnesota. The tour is open to section members and their families or guests. In addition to the many fine beers Schell's is noted for, they also make the famous 1919 Root Beer brand.

Visit the town that was nearly destroyed in 1862. Find out why the brewery was left untouched.

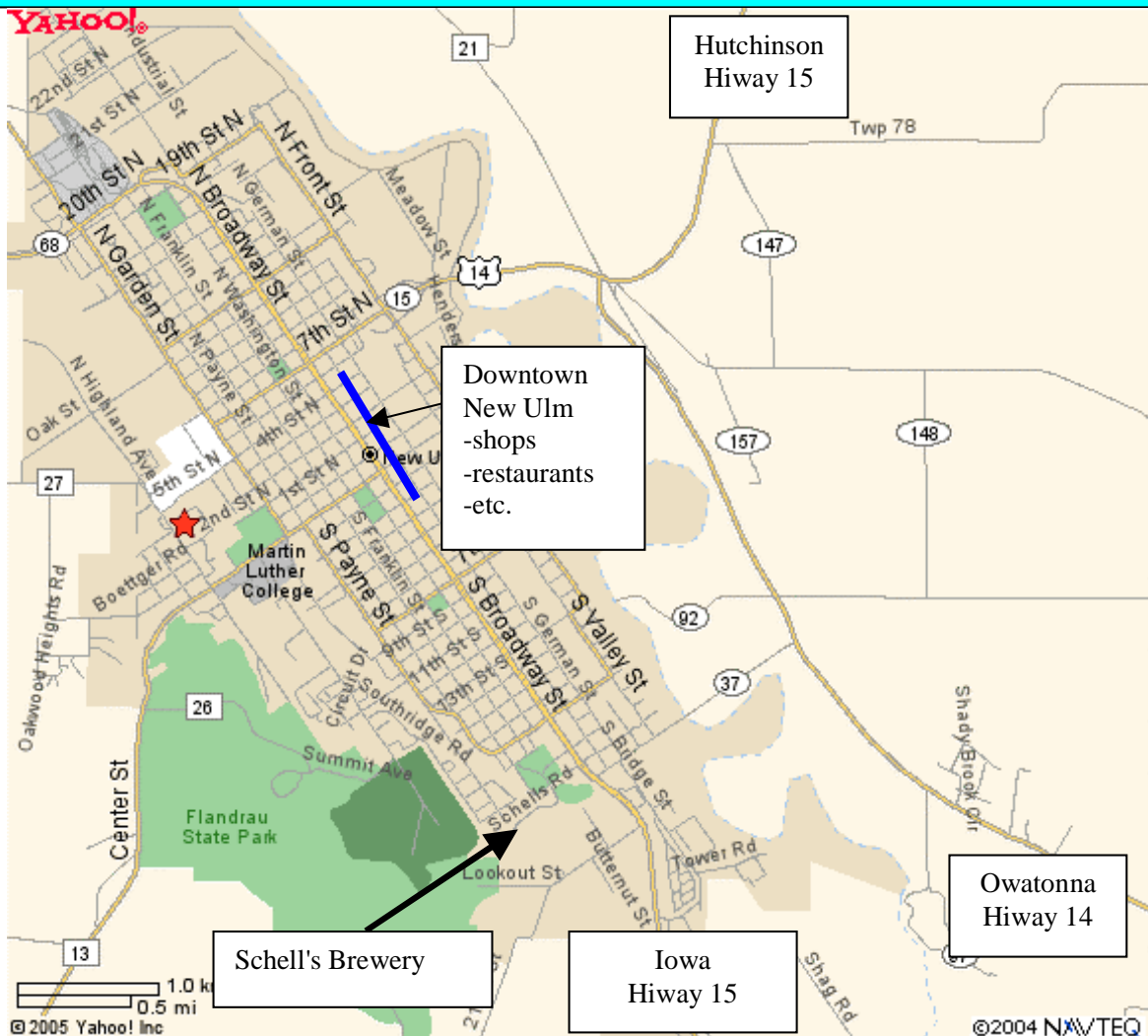
The tour starts at 11:00AM, and while there are no dining facilities at the brewery yet, we will provide a list of the many fine restaurants and eating places in downtown New Ulm. Bring the family and enjoy a pleasant day at the many unique shops and businesses New Ulm has to offer.

Cost is \$15 for adults, and includes \$10 in New Ulm Chamber Dollars good at virtually any business in New Ulm. Kids are only \$2. We are limited to 50 people, so sign up early.

Interested in a bus or van? Let us know and we'll see if there are enough people from an area to get one.

See the map on the next page.

Know a colleague that hasn't signed up for email? Copy these pages (4 & 5) and let them know what's happening.



Directions:

From the North - Highway 15: Turn left (East) onto US 14 just before you enter New Ulm. Follow US 14 about 2 miles and turn right (west) on Co Rd 37. Follow directions below.

From the East - Highway 14: Turn left on Co Rd 37 just before you enter New Ulm. Follow directions below.

From the South - Highway 15: Come all the way to New Ulm. Follow directions below.

Highways 37 and 15 intersect at a traffic light near the Target store.
 Turn right on Highway 15 and immediately get into the left hand lane.
 Make a left turn onto 18th Street - just after Target at the auto parts store.
 Take the left "Y" just after the small bridge.
 Carefully follow the winding road to Schell's Brewery.

From the West - Highway 14: Stay on 14 into New Ulm. Continue straight ahead on Highway 15 South (at Hardee's). Watch for McDonalds on your left, and turn right at the auto parts store. Take the left "Y" after the small bridge and carefully follow the winding road to Schell's Brewery.

There are signs directing to the Brewery. Plus, almost all the folks in New Ulm are friendly and know where the Brewery is.

ASQ Hiawatha Section 1214 & South Central Technical College**FAILURE MODE AND EFFECTS ANALYSIS (FMEA)****Presented by: Tom Humphreys****Second Session****May 25, 2005****8:00 am to 4:30 pm****South Central Technical College Campus, Faribault, MN****Cost: \$245****ASQ Members and Partners: \$220****Do you need to understand FMEA?**

Due to the overwhelming response to our April 12, 2005 FMEA seminar, we are scheduling a second session to accommodate the registrants who had to be turned away.

Come to this one-day seminar and work through the FMEA steps. On May 25, 2005, you'll get a chance to attend an FMEA workshop led by Tom Humphreys of Advanced Quality Engineering. Under Tom's leadership, you will learn how to: apply FMEA for products and processes; relate FMEA to the requirements of ISO/TS16949:2002; calculate probability of survival and mean life; and calculate safety margin for product designs. You will take back with you the AIAG FMEA manual & handout materials, an understanding of product liability and reliability and how to improve product and process designs.

Topics covered:

- Failure distributions & safety margin
- Issues of product liability
- Rudiments of reliability
- Factors affecting quality
- Block diagrams & flowcharts
- Design FMEA
- Process FMEA

Who should attend: Product & Process Designers and Engineers. Manufacturing Engineers, Quality Engineers, Production Personnel, and Managers of these functions.

Suggestion: Attend with one or more colleagues from work. As the day unfolds and you go through the activities together, you'll develop a common understanding and collective action plan.

For more information check our website: www.asq1214.org and click on Section Meetings

To Register**Call Laura at South Central Technical College at 507-332-5802**

Successful FMEA Seminar

The largest turnout in several years.



The Hiawatha Section's annual seminar, held April 12th at Cabela's in Owatonna, was a huge success, with over 70 participants attending the excellent program delivered by Mr. Tom Humphreys from Advanced Quality Engineering, Inc. The program covered defining a process or system with flow diagrams, conducting FMEA on high risk steps, and using the FMEA to develop the control plan.



A repeat of the workshop is scheduled for May 25th at South Central Technical College in Faribault due to the overwhelming interest in the program that exceeded the capacity of Cabela's conference room. Anyone who missed the April 12th event is welcome to register for the May 25th session. To see the [FMEA brochure](#), [click here](#), including registration details.

Rochester Area Quality Council News

In the upcoming weeks we have two great programs. On Friday, April 29th we are proud to co-sponsor a Maximum Impact Simulcast "The Influential Leader." Come and learn from some of the best....John C. Maxwell, Patrick Lencioni, Coach Bobby Bowden. Details can be found on our website, www.raqc.com under Special Event.

Our next monthly breakfast program is on Tuesday, May 3rd. Mr. Bill Harreld from Quality Culture Institute will present "Project Management 101." Come hear from an old pro how to get the project done right and on schedule. To register and learn more details again go to our website, www.raqc.com under Program. Hope to see you at both these events!

--

Connie Kurth
Marketing & Administrative
Assistant
Rochester Area Quality Council

QUALITY INFORMATION AVAILABLE AT THE LIBRARIES

How would you like to be able to borrow a book from the library when you want to understand a quality issue or need a reference book to help take an ASQ Certification test?

The Minnesota Libraries are on the internet (you may need to get a pin number from your local library to go along with your library card). If you just want to check it out first, logon as a Guest. At the top of the screen there are a few options. One is "other Logon Option." Click on it and it will tell you what you need for a password.

On the internet, go to www.MNLink.org. Select the option to do a *Search the MnLink Gateway*. Logon as a user or as a Guest. The next screen, select the area in Minnesota or what library groups you want. Click on *Go*. Now you are at the Search screen to do your search. Once you find your item, you can have it sent to your local library.

MNLink is starting a new search, where you can search all the libraries in the state and order on line. Just go out on the internet and check out MNLink and get your information through the library. Happy Hunting.

Certification Fees

New Exam Fees – 2005

	<u>Member</u>	<u>Non-Member</u>
Quality Manager	\$270	\$420
CQA, CQE, CRE, CSQE, CQA-HACCP, CQA-Biomedical	\$210	\$360
Certified Six Sigma Black Belt	\$180	\$330
CQT, CMI, CQIA, CCT	\$155	\$305

*PLEASE NOTE: A portion of the above fees (\$50.00) is an application fee and is non-refundable.
--

Retake Fee

Quality Manager	\$220	\$220
CQA, CQE, CRE, CSQE, CQA-HACCP, CQA-Biomedical	\$160	\$160
Certified Six Sigma Black Belt	\$130	\$130
CQT, CMI, CQIA, CCT	\$105	

Re-Certification Fees

Quantity of Certifications

	<u>Member</u>	<u>Non-Member</u>
One Re-certification	\$30	\$50
Two or more Re-certifications	\$50 (Total)	\$50 (Each)

Re-Certify by Exam

Quality Manager	\$220	\$370
CQA/CQE/CRE/CSQE/CQA-HACCP/ CQA Biomedical	\$160	\$310
Certified Six Sigma Black Belt	\$190	\$340
CQT, CMI, CQIA	\$155	\$260
CCT	\$105	\$225

PLEASE NOTE: You must include payment with your re-certification journal. Do not send cash. ASQ will accept check, money order, bank draft, electronic wire transfer of funds, and credit card (VISA, MasterCard, or American Express). \$50.00 of your fee is an application fee and is not refundable.

2004-2005 Re-certification Guidelines

1. **Prepare your Journal** and supporting documentation no sooner than six months before the expiration date, but no later than six months after the expiration date. If needed, Re-certification Journals are available from National ASQ by calling 1-800-248-1946 or on their web site at asq.org. ASQ National will begin sending email reminders to those members who have valid email addresses and bright colored postcards to those member who don't.
2. **Make copies of all supporting documentation** and submit these copies with the Journal to support all claimed RU's. Submitted Journals and supporting documentation will not be returned. Some typical examples of supporting documentation include:
 - Letter from employer stating dates of employment and job duties.
 - Section monthly meeting attendance receipts.
 - Educational transcripts.
 - Education program or seminar outlines with certificates of attendance or instructors signature.
 - Written verification from your supervisor confirming videotape training completion with the subject and length of each video.
3. **Fill out all required information** on your Journal cover page including your membership number, certificate number(s), and complete mailing address and phone number(s). Cost for re-certification for **members** is \$30 for one re-certification and \$50 for two or more synchronized re-certifications. For **non-members**, the cost is \$50 for each re-certification. Attach a check payable to ASQ or use a credit card number on the Journal cover page. Sign and date the Journal cover page.
4. **Send your Journal** and supporting documentation copies to the following address: **Lee Anderson, 342 E. Pearl Street, Owatonna, MN 55060.**
5. You can contact me by phone at (W) 612-963-2399 or (H) 507-455-3934, or feel free to email me at leeander50@mac.com.
6. After submission of your Journal, **allow six to eight weeks** to receive your re-certification confirmation from National ASQ.
7. **A special note for those who currently hold the CQA-HACCP add-on certification:** it will become its own stand-alone certification **effective October 1, 2004**, after that date it will become the Certified HACCP Auditor or CHA exam/certification. Requirements for CHA recertification will be just like those of the CQA, CQE, and so on. Anyone recertifying their CQA-HACCP before October 1, 2004 will follow the current recertification requirements. After October 1, 2004 then the CHA will require separate recertification. A special separate mailing notice will be sent to all current valid CQA-HACCP customers with regards to this change in August.

ASQ Section Leadership Committee

Name	Contact Information	Committee Position
Lisa Krause Malt-O-Meal 701 West 5 th St Northfield, MN 55057	Email: lisa_k_Krause@malt-o-meal.com Phone: 507-645-6681 Ext. 4304 Fax: 507-663-6242	Chairperson Program Chair
Shannon Bruhns Fleetguard Inc. 311 North Park Lake Mills, IA 50450	Email: Shannon.l.bruhns@fleetguard.com Phone: 641-592-7356 Fax: 641-592-1315	Vice Chairperson
Bill Harris Holm Industries PO Box 187 2523 South Bridge Street New Ulm, MN 56073	Email: bharris@holmindustries.com Phone: 507-354-3191 Fax: 507-354-3193	Treasurer Newsletter Editor Membership Chair
Lorraine Morris Advanced Components Tech, Inc. 91 16th Street South P.O.Box 168 Northwood, IA 50459	Email: lmorris@goact.net Phone : 641-324-4262 Fax: 641-324-3170	Secretary
Minnie Dunbar Fleetguard Inc. 311 North Park Lake Mills, IA 50450	Email: Minnie.e.dunbar@fleetguard.com Phone: 641-592-7395 Fax: 641-592-1315	Auditing Chair
Dick Sunsdahl South Central Technical College 1225 3 rd St SW Faribault, MN 55021	Email: dick.sunsdahl@southcentral.edu Phone: 507-334-3965 Fax: 507-332-5888	Education Chair Historian
Lee Anderson Partners for Change PO Box 293 Owatonna, MN 55060-0293	Email: lee.anderson@bevcomm.net Phone: 612-963-2399	Certification Chair Recertification Chair
John Moorhouse Northstar Quality, Inc. 45526 Linda Lane Kilkenny, MN 56052	Email: john@northstarquality.com Phone: 507-279-3513	Internet Liaison (Web Master)